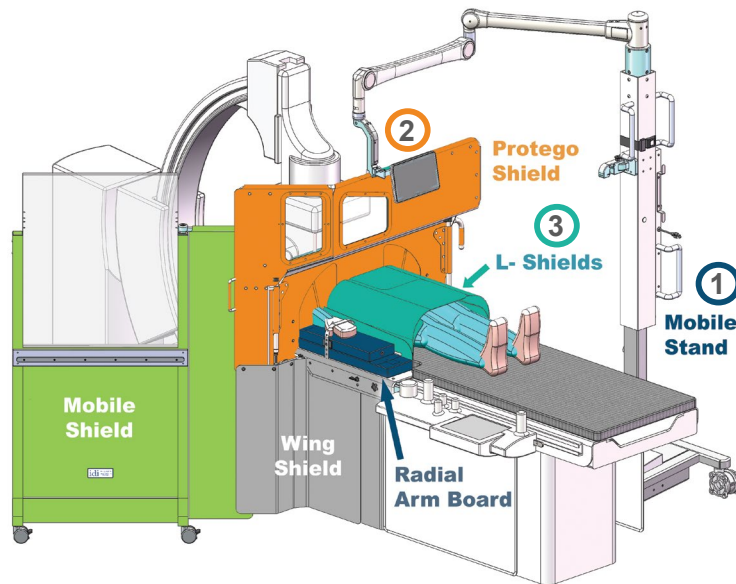


Q-CARD: Procedure Set-Up



DO NOT USE the Protego™ Radiation Protection System until having completed training and read the manual.

BEFORE THE PATIENT IS IN THE ROOM



2 PLUG IN MONITOR

- Plug is located on Mobile Stand
- ~60 seconds to boot
- Touch screen to cycle through image layouts (single left, single right, left-right split)

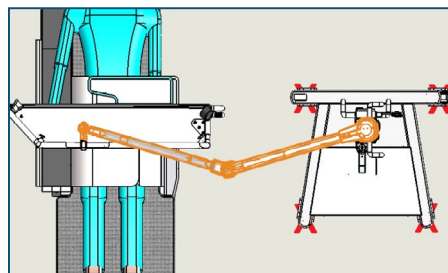
3 DRAPE THE L-SHIELDS

- TWO PERSON TASK, A STERILE AND A NON-STERILE
- Instructional tab faces out



1 MOBILE STAND POSITIONING

1. Place Mobile Stand on the predetermined marks on the floor for the stand.
2. Lock two casters.
3. There will be a bend in the support arm of the Protego Shield. Locate the direction of the bend to avoid clashing with other equipment.



*The support arm must have some bend in it to pan properly.
(Support arm indicated by orange color in image above.)*

DOSIMETRY SET UP

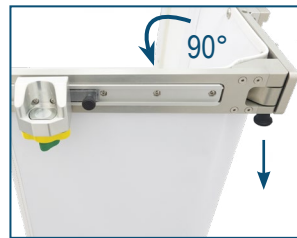
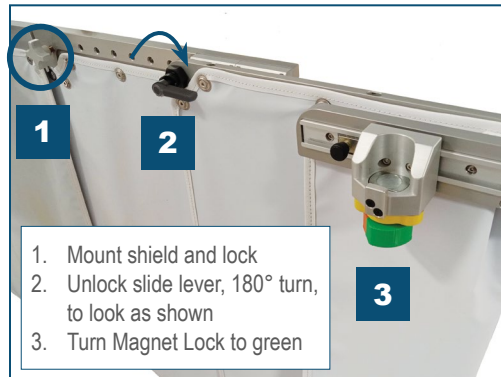
- Badges are reset to zero and are recognized by the system.
- All operators without aprons must wear badges.
- Operator at Protego Shield side should use two badges: at thyroid and waist.

SUPPLY THE BACK TABLE

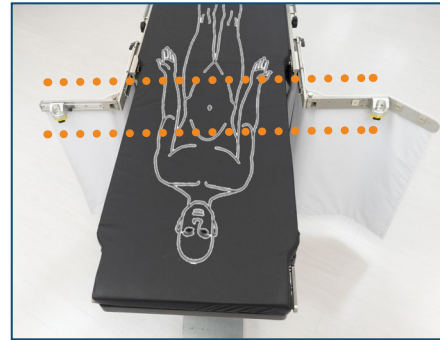
Have a ProKit™ Draping Kit open on the back table and also a Disposable Radial Shield and/or a Disposable Bilateral Groin Access Shield if necessary.

AFTER THE PATIENT IS ON THE TABLE

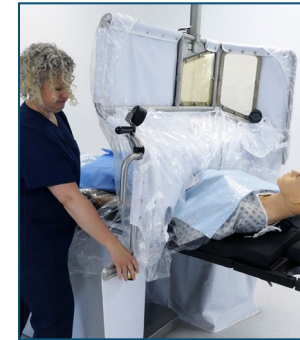
1. MOUNT WING SHIELD TO RAIL, EXTEND WINGS, ALIGN TO PATIENT



Pull down to release Wing, swing out 90° until locks in place



Ensure Wing Shields align to patient umbilicus.

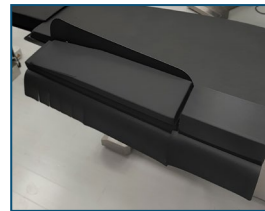


Wing shield slide provides 8" of movement for easy repositioning of the Protego Shield. Moving shield toward patient feet can increase potential angulation of C-arm.

2. POSITION ARMBOARD SHIELDING SYSTEM

Place long Radial Armboard first. Then overlap short board, ensuring the cascading shielding overlaps.

WARNING: ALWAYS use the right-side Shielded Radial Armboard as it provides necessary radiation shielding.



Radial Armboard (2 pieces)

3. PREP ACCESS SITES & PLACE THE PATIENT SURGICAL DRAPE

4. DRAPE PROTEGO™ SHIELD

See Protego Draping Q-Card; Protego Manual p. 18-19.

Each Protego ProKit contains: 1 drape for the Protego Shield and 2 drapes for the L-Shields

Unfold Protego Shield Drape

1. Place the Protego drape with the head label toward the patient's head to the left and the foot label toward the patient's feet to the right, as shown in Figure A.
2. IMPORTANT - unfold in the direction of the arrows being careful to keep the right side above the top of the table, as shown in Figure B.
3. Spread out the drape left to right over the Patient's drape, once fully exposed locate the Protego shield over the drape, as shown in Figure C.

WARNING: Drape sterility will be compromised if the drape falls below the tabletop.



Drape Protego Shield

Locate Protego™ Shield over the groin area of the patient. The shield should be over the drape's seam, and the **yellow dots** should be at or near the Wing Shield Magnet Locks.

1. Center Protego Shield's aperture flaps over the drape center seam. The drape's yellow dots should be near the magnet locks.
2. On the patient foot side, place drape over both top corners of the Protego Shield as shown in Figure A.
3. On the C-arm side, wrap elastic area over the shield's side handle. Locate the second elastic area and place over the patient-side hook under the shield windows. Repeat draping procedure on the left side.
4. Using tape tabs provided, carefully enclose each side of the Protego Shield.
5. If using a radial approach, place the Protego Shield feet into the Wing Shield magnet locks. If using groin access, leave Protego Shield floating low for now. (See *Access Point Imaging Options* section on page 2.)
6. Check the access site to confirm you have room to access. If you need more angulation or access, slide the Wing Shield & Protego shield together toward the patient's feet.
7. Drape should not cover the C-arm side cameras or foot-side monitor. Look for obvious distortions of the aperture flaps, they should lay flat on the patient. Correct as necessary.



A
Place drape over top corners of foot-side of Protego Shield



B
Place drape over side handles



C
Protego Shield Properly Draped, Foot Side



D
Place drape on hooks on head-side of Protego Shield



E
Tape drape closed over the shield



F
Protego Shield Properly Draped, Head Side

RADIAL ACCESS

1. Lower the Protego Shield into the Wing Shield magnet locks.
2. Proceed to Step 5, Draping for Patient Scatter.

GROIN ACCESS - MAPPING

See Protego Manual p. 19.

1. Lower the Protego Shield and move towards the patient feet to expose mapping site (as shown).
2. Take shot.
3. Confirm access.
4. Lower the Protego Shield into the Wing Shield magnet locks.
5. Proceed to Step 5, Draping for Patient Scatter.



5. POSITION L-SHIELDS TO HELP BLOCK PATIENT SCATTER

See Protego Manual p. 19. Shields are shown without their sterile drapes for clarity.

WARNING: L-Shields, bilateral groin access shield, and radial arm shield must all overlap the Protego Shield aperture flaps.

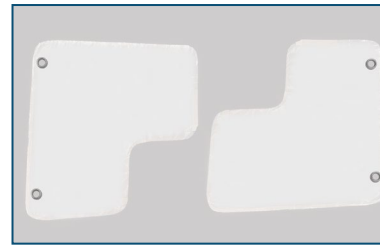
6. PLACE MOBILE SHIELD

See Protego Manual p. 20.

7. FINAL CHECK

- RADIAL ARMBOARD is seated next to patient.
- APERTURE FLAPS are facing the patients' feet, overlapping, and there are no obvious leak points.
- L-SHIELDS are overlapping the flaps, secured with the adhesive strips on bottom of drapes, and extended laterally as far as they can be.
- RADIAL ARM SHIELD is up and taped to the face of the Protego.
- TABLE SIDE SHIELDS must hang freely and overlap to ensure shield integrity. The footswitch should be clear of the panels.
- BADGES are all active, reset, and recognized by the system.
- MOBILE STAND is positioned as close as possible to the table while permitting access to the patient. The PROTEGO SHIELD ARM must not be straight to ensure proper panning with the table.

Positioning L-Shields for Radial Approach



Place patient-left side on patient first. Make a square shape with the patient-right L-Shield



L-Shields must overlap Protego Shield aperture flaps, use drape tape to secure



Positioning L-Shields for Groin Approach



FOLD UNDER
FOR RADIAL
ACCESS



Ensure drape's tape faces patient.



8. CONTINUOUS MONITORING OF RADIATION DOSE DURING PROCURES

See Protego Manual p. 20.

IMPORTANT! A staff member must be designated to observe the exposure level during the case and call out when radiation levels are noted by the badge. At no time should the exposure levels exceed the Radiation safety Officer's determined maximum single procedure dose.

These are the steps to take in the event of an unusually high radiation dose reading.

1. Check the L-Shields for possible migration during the case. Reposition if necessary.
2. Verify that aperture flaps of the Protego Shield are overlapping and there are no separations causing the radiation leak.
3. The Side Shields must be overlapping and unhindered by other equipment in the room. The C-arm foot switch could be causing a shield not to hang correctly.
4. If radiation levels exceed the allowable benchmark and the leak cannot be resolved, team members must put on appropriate personal protective lead shielding.



DO NOT USE the Protego™ Radiation Protection System without the RaySafe™ real-time radiation monitoring system to monitor radiation exposure levels and protection.



Failure to monitor radiation exposure levels with the RaySafe™ real-time system is a misuse of Protego™ Radiation Protection System and can result in serious injury or death.



Radiation exposure is dangerous and cumulative. The protection afforded by the Protego™ Radiation Protection System cannot reduce the amount of radiation to which an individual has already been exposed or undo any damage an individual has already sustained from previous exposure.



ORDER: sales@imagediagnostics.com
SUPPORT: techsupport@imagediagnostics.com
WEBSITE: <https://imagediagnostics.com/protego>



+1-978-829-0009
Monday through Friday
8am to 5pm, Eastern

